

EURLAB

EUROPEAN

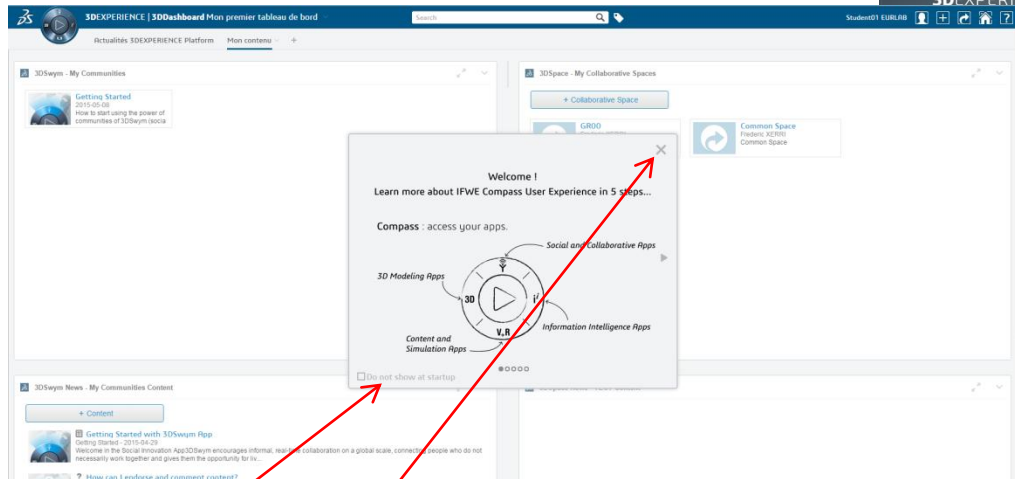
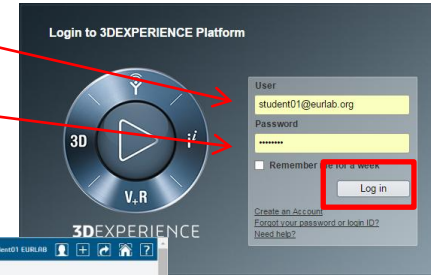
ROBOTIC

LABORATORY

HOW TO START 3D EXPERIENCE

1-HOW TO CONNECT TO 3D DASHBOARD

- 1-Launch 3D Experience software by clicking 3D experience icon on your desktop
- 2- Enter your User (**studentx@eurlab.org**) and your Password (**LLAxeu15**)
- 3-Validate by clicking Log in
- 4-3DEXPERIENCE Platform is opened



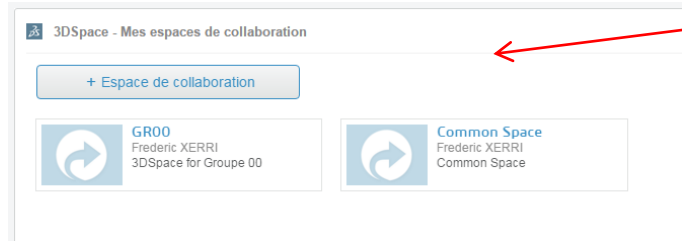
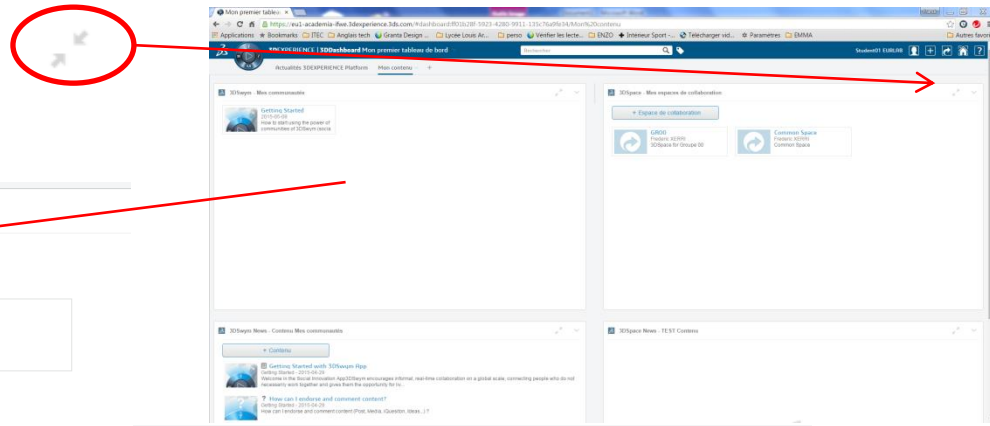
5-Select

Do not show at startup

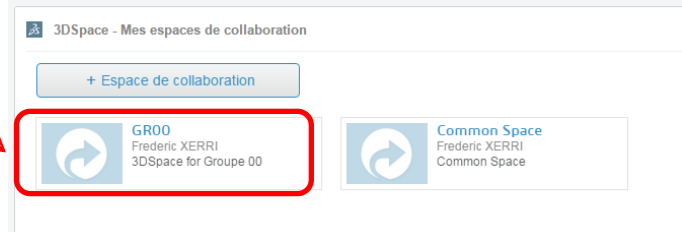
6-Close the window

2-HOW TO CONFIGURE 3D DASHBOARD

- 1-Select arrows on the right side
- 2-3D SPACE is enlarged



- 3-Select your group (GR00 to GR15)



- 4-Select 3D quadrant of the compass



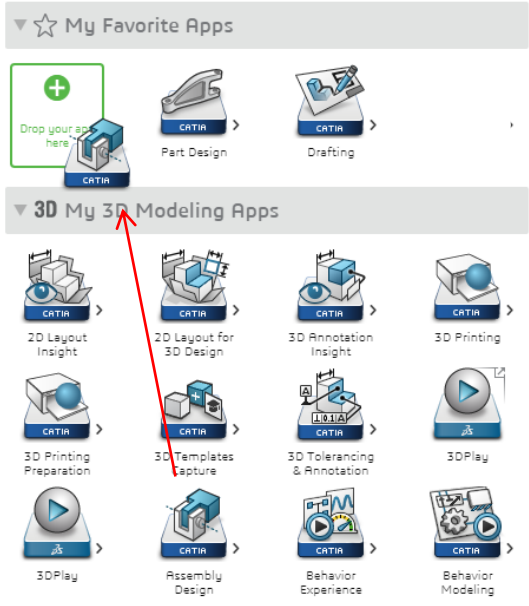
This compass allows users to access to the applications in the 3DEXPERIENCE Platform

- 5- 3D Modeling apps Menu is opened



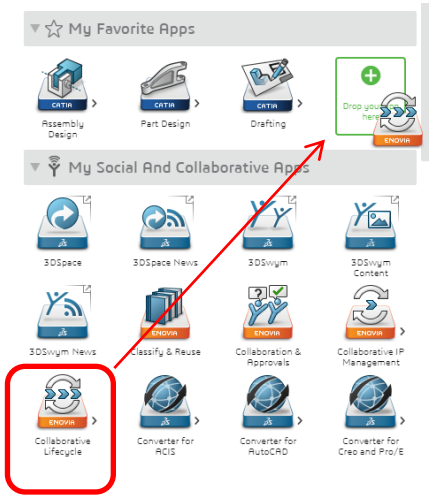
3-HOW TO CONFIGURE 3D DASHBOARD

6-Drop PartDesign App, Drafting App, Assembly Design App to My Favorite Apps



7-Select Social and Collaborative Apps quadrant of the compass

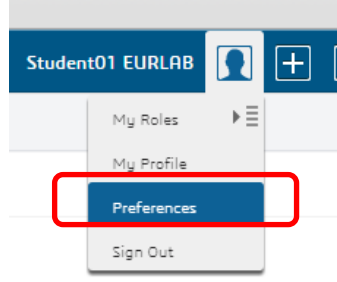
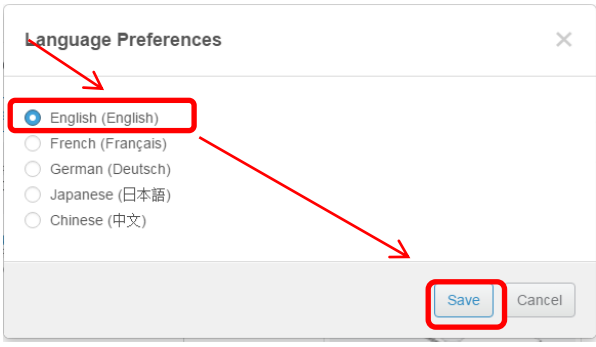
8- Drop Collaborative Lifecycle Management App to My Favorite Apps



4-HOW TO CONFIGURE LANGUAGE PREFERENCES

1-Select Preferences in 3D Dashboard

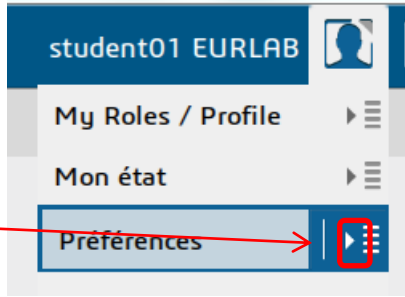
2-Select Only English language



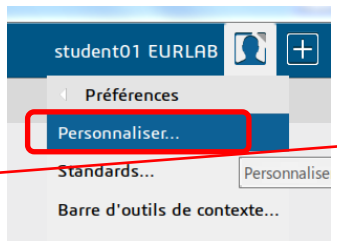
3-Click Part Design App to launch 3DEXPERIENCE



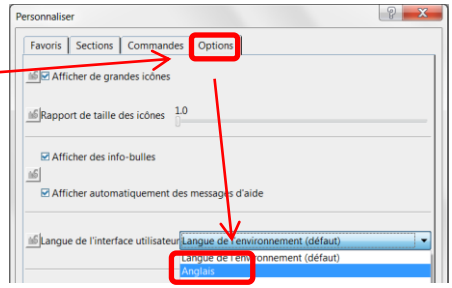
4-Select triangle near Preferences in 3DEXPERIENCE



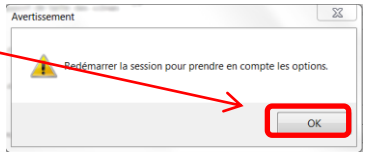
5-Select Personnaliser



6-Select Options tab and Anglais



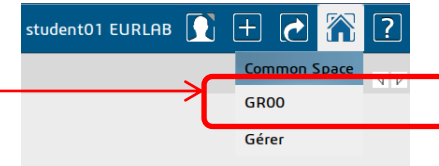
7-Select Ok in the new window



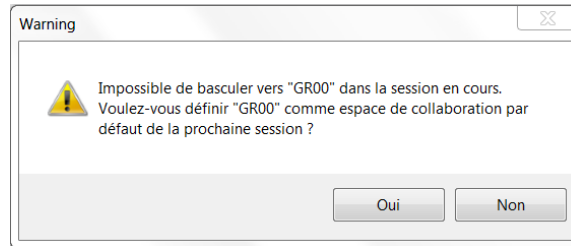
5-HOW TO SELECT WORKGROUP

Common Space group is selected by default in 3DEXPERIENCE

1-Select your group (01 to 15) by clicking House icon



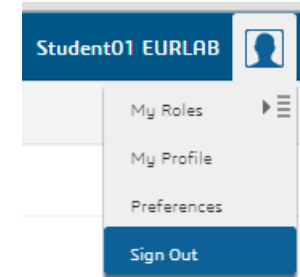
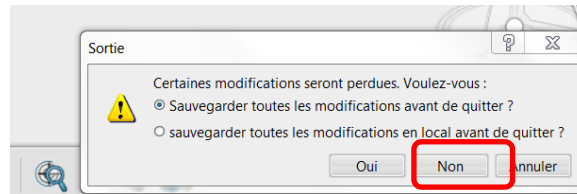
2-A message appears:



3-close the window



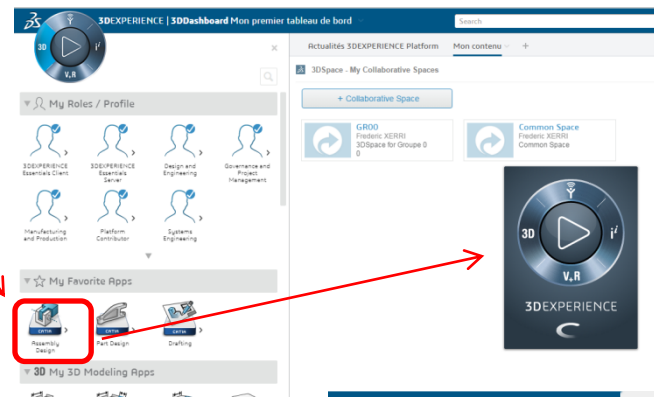
4-Select Non



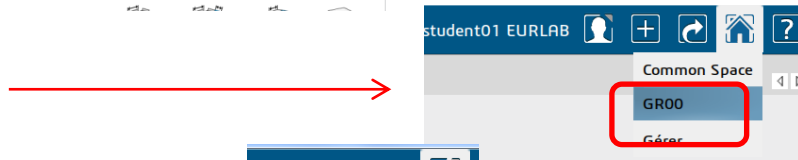
5-Select Sign Out in the ME Menu to logout and disconnect from the session of the 3DEXPERIENCE Platform

6-HOW TO VERIFY PREFERENCES

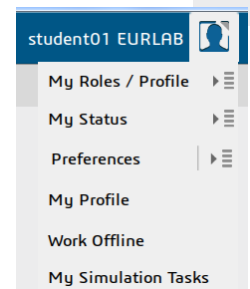
- 1-Launch 3D Experience software by clicking 3D experience icon on your desktop
- 2- Enter your User (**student01@eurlab.org**) and your Password (**LLA1eu15**)
- 3-Validate by clicking Log in
- 4-Launch PartDesign again



5-Verify GR00 is selected

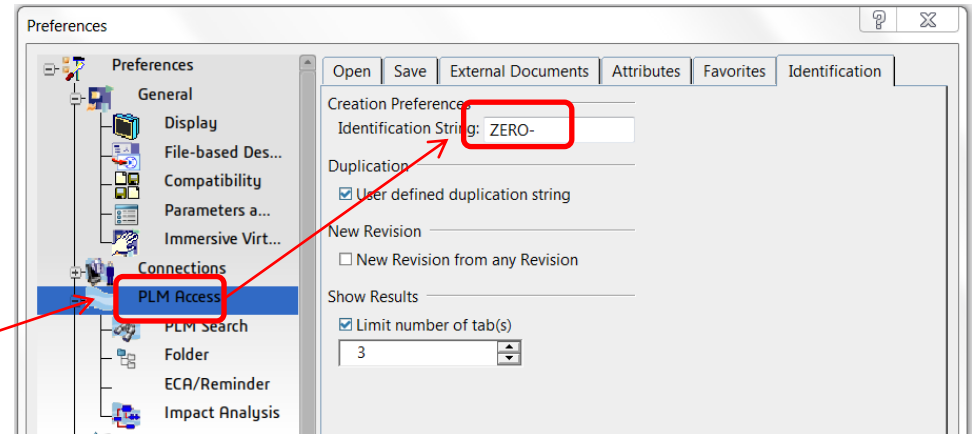
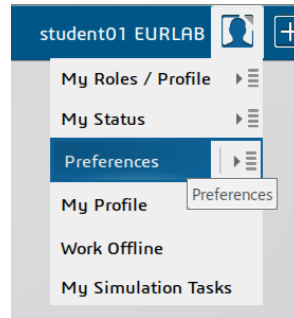


6-Verify Language Menu is English



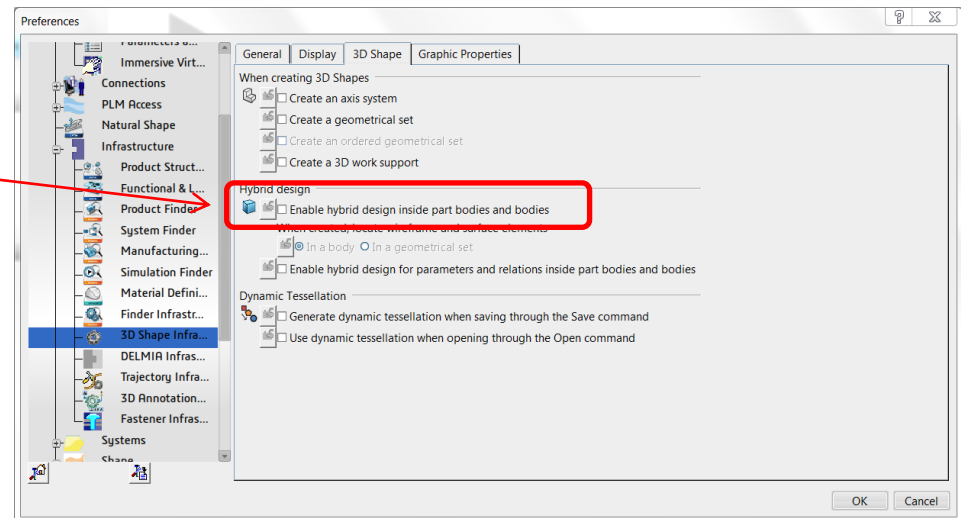
7-HOW TO CONFIGURE OPTIONS

1-Select Preferences



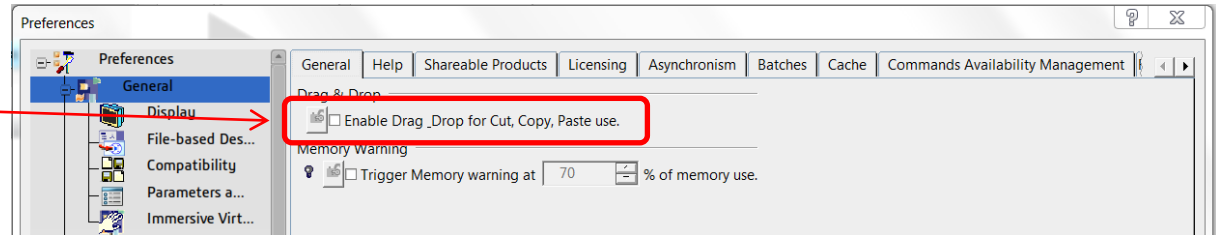
2-Add Zero in front of names

3-No hybrid Design : Deselect tab

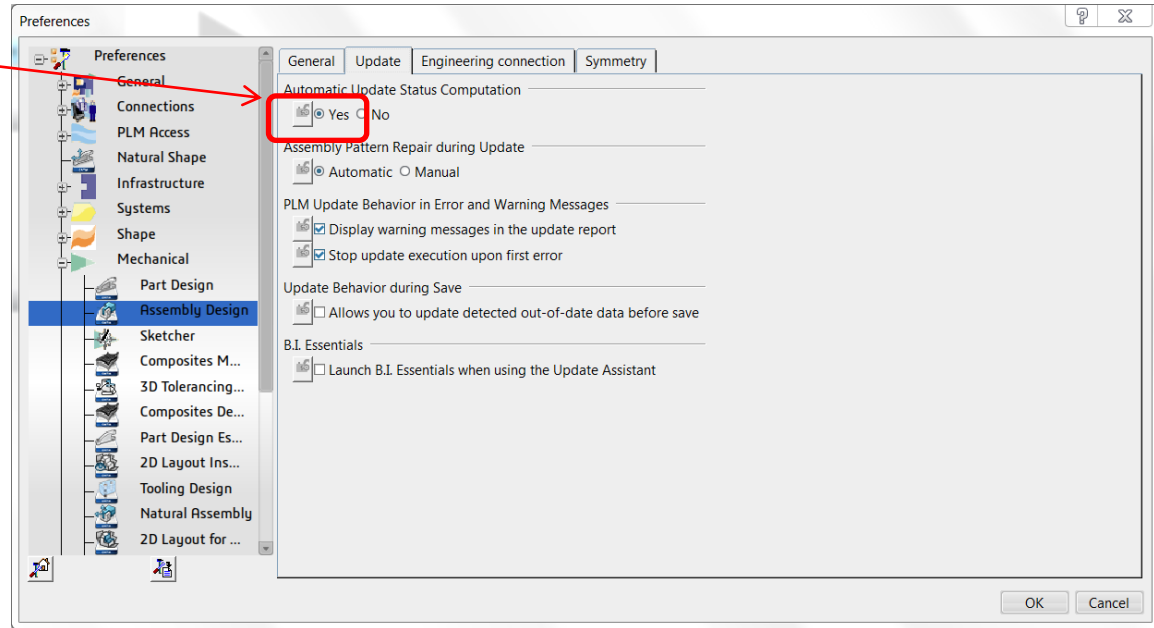


7-HOW TO CONFIGURE OPTIONS

4-To avoid Drap and Droq : Deselect tab



5-Automatic update status



7-HOW TO CONFIGURE OPTIONS

6-Lock engineering connection and check interferences

Deselect tab

